



HOUSE & LAND PACKAGE

51 (LOT 4) PHILLIPS DRIVE, OROPI

\$2,175,000*

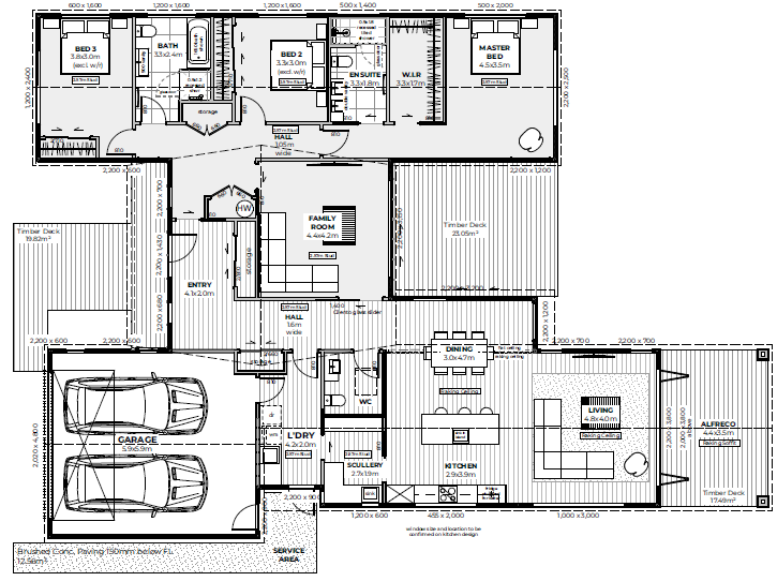
A BEAUTIFUL LANDMARK IN LOCHANVALE

3 2.5 2 1

Tucked away in a prestigious semi-rural pocket off Phillips Drive, Lochanvale offers a rare opportunity to build a bespoke dream home in a highly coveted boutique subdivision. Designed for those who value space, privacy, and connection to nature, it balances tranquil country living with easy urban access.

Centred around a community lake and scenic walking trails, the development provides a calm, open backdrop that elevates everyday life. Titles have been issued, giving you the immediate freedom to build a custom architectural Landmark home.

The Heart of Home - An expansive open-concept kitchen, dining and living zone creates a welcoming centrepiece for family life. Seamless indoor-outdoor flow. Multiple direct access points lead out to expansive alfresco decking, perfect for year-round entertaining. Bonus multi-purpose room: dedicated family room/media space offers the perfect secondary retreat for kids, teens or a quiet privately positioned at the rear of the home with dedicated walk-in-wardrobe and full ensuite bathroom.



SPECIAL FEATURES

- Modern Family Oasis with Ultimate separation
- Separate Master with walk in wardrobe and ensuite
- Internal Laundry
- Masses of storage with generous hallways



DIMENSIONS

Total Floor Area
Land Area

237.1m²
4900.0m²



*NB: These images are an indication of what can be built on the site for the package price. Negotiation and purchase of this House & Land package will be directly through Landmark Homes - BOP

CONTACT DONNA PHILLIPS
027 296 1314
donna.phillips@landmarkhomes.co.nz

