



HOUSE & LAND PACKAGE

51 (LOT 5) PHILLIPS DRIVE, OROPI

\$2,235,000*

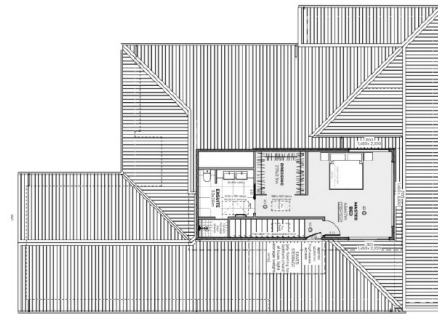
A CLASSIC LANDMARK HOME IN LOCHANVALE

3  2.5  2  2 

Tucked away in a prestigious semi-rural pocket off Phillips Drive, Lochanvale offers a rare opportunity to build a bespoke dream home in a highly coveted boutique subdivision. Designed for those who value space, privacy, and connection to nature, it balances tranquil country living with easy urban access.

Centred around a community lake and scenic walking trails, the development provides a calm, open backdrop that elevates everyday life. Titles have been issued, giving you the immediate freedom to build a custom architectural Landmark home.

This beautifully designed Landmark home has been specifically designed to capture the lake views in Lochanvale. Upstairs we have a large separate oasis with the Masterbedroom, walk in wardrobe, storage area and ensuite with double vanity and tiled shower. Lock away the world and enjoy the view. Downstairs we have a separate Living area, Media Room, Study Nook, Internal Laundry and a Wine Room!



SPECIAL FEATURES

- 2 storey with private aster area upstairs
- Media Room
- Wine Room
- Separate Living area with Gas Fire
- Large Entry
- Full Height Cilento Glass Cavity Sliders



DIMENSIONS

Total Floor Area
Land Area

265.6m²
5400.0m²



*NB: These images are an indication of what can be built on the site for the package price. Negotiation and purchase of this House & Land package will be directly through Landmark Homes - BOP

CONTACT DONNA PHILLIPS
027 296 1314
donna.phillips@landmarkhomes.co.nz

