



HOUSE & LAND PACKAGE

525 OTUMOETAI RD MATUA, TAURANGA

\$1,314,000*

LANDMARK LIFE STYLE

3 2.5 2 1

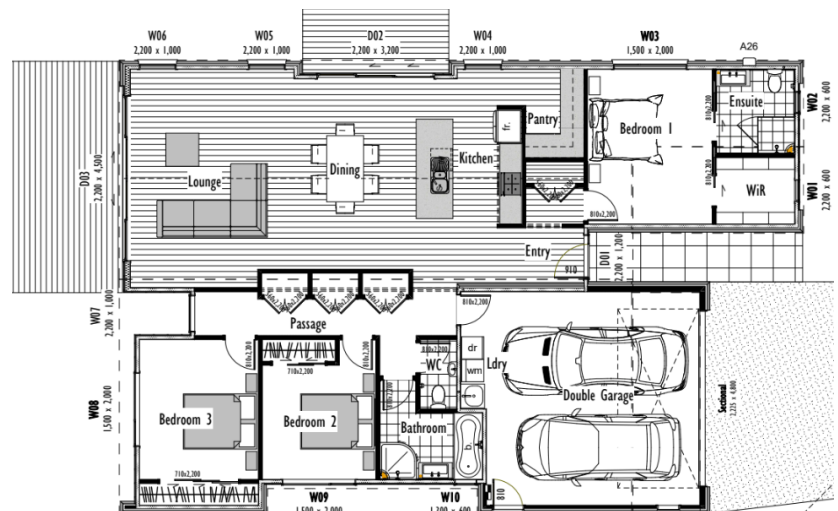
Wonderful living in this single level home in Matua. Don't miss your chance to secure this premium house and land package in one of Tauranga's most sought-after suburbs. Such a rare find vacant land here in Matua.

Situated just a short stroll from Cherrywood Village and the scenic Beach Road promenade, this centrally located section offers unbeatable convenience.

Step inside to find a spacious open-plan kitchen and living area, ideal for entertaining, with seamless indoor-outdoor flow to a sun soaked lounge and alfresco dining area.

This plan and home is designed for effortless enjoyment, this home is perfect for those who want the charm of being in Matua and a modern home.

This is not a set plan and anything can be designed to best suit your needs for those looking to invest in quality living.



SPECIAL FEATURES

- Open-plan kitchen, dining & living upstairs
- Master suite with ultimate privacy
- Council Fees included
- All site works and retaining included
- Safe and secure
- Bright open plan living
- Space for a boat, motorhome, or pool



DIMENSIONS

Total Living Area	187m ²
Garage Area	35.0m ²
Total Floor Area	187m ²
Land Area	406m ²



*NB: These images are an indication of what can be built on the site for the package price. Negotiation and purchase of this House & Land package will be directly through Landmark Homes Bay of Plenty.

CONTACT SHANE RAYMOND

027 570 0908

shane.raymond@landmarkhomes.co.nz

