



HOUSE & LAND PACKAGE

44 KING ROAD, TAUPŌ

\$1,482,000*

COMPLETE IN EVERY RESPECT

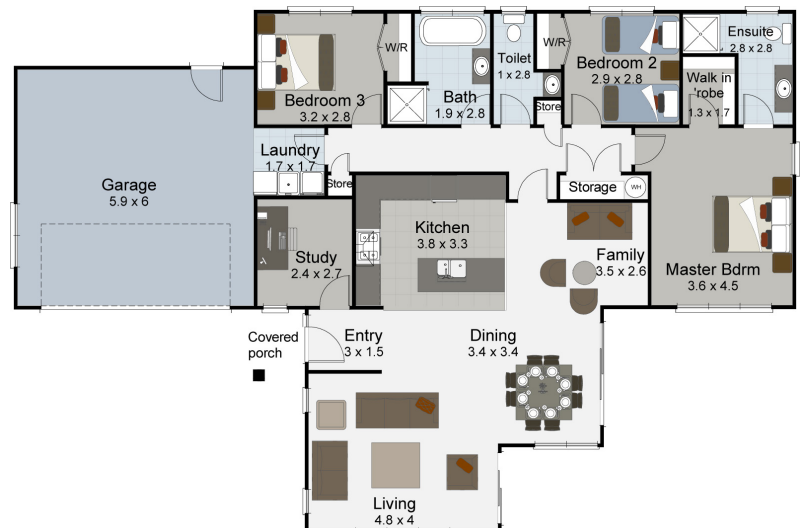
4 2 2 1

Our timeless Duet design in weatherboard and plaster, features a lovely area under a pergola.

Imagine crafting your dream home, perfectly positioned to capture breathtaking, uninterrupted vistas of the glistening lake, majestic mountains, and verdant rural landscapes of the Central Plateau. Perched on an elevated site within the exclusive Whakaipo Park subdivision, this property commands a rare, panoramic outlook—an eagle's-eye perspective over nature's finest scenery.

This modern dual-clad design in weatherboard and plaster, features a lovely area under a pergola that flows from the family space, maximises the sun, outdoor living and even a view to the south or east. This stylish home has four bedrooms, and a study, with open plan living around a central kitchen hub, perfect for family living and entertaining.

Whakaipo Park offers a remarkable setting to build your legacy and a lifestyle rich in adventure and relaxation.



SPECIAL FEATURES

- Open plan kitchen, dining and living
- Indoor-outdoor flow to patio with pergola
- Combination cladding

DIMENSIONS

Total Living Area	165.1m ²
Garage Area	39.5m ²
Total Floor Area	211.5m ²
Porches	6.9m ²
Total Area	287.9m ²
Land Area	5007m ² mol



*NB: These images are an indication of what can be built on the site for the package price. Negotiation and purchase of this House & Land package will be directly through Landmark Homes. Taupō. Plans are indicative only and will need to comply with section covenants and setbacks

CONTACT US TODAY
07 376 8528

salestaupo@landmarkhomes.co.nz

