



HOUSE & LAND PACKAGE

13 KARAIPITURE ROAD (LOT 143), PAERATA RISE

\$1,285,000*

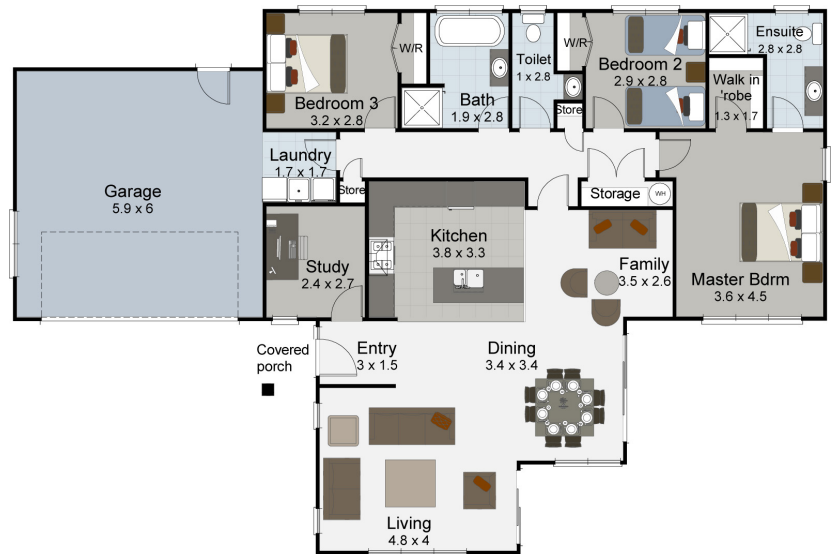
EFFORTLESS MODERN LIVING

3  2.5  2  1 

Living in Paerata Rise offers a balanced lifestyle that blends modern convenience with a relaxed, semi-rural feel. With easy access to transport links, including the nearby train station and motorway connections, commuting to central Auckland or surrounding hubs is straightforward while still enjoying a quieter environment away from the city bustle.

Another key appeal is the strong sense of community and long-term vision for the area. Schools, parks, walking tracks, and local amenities are all part of the development plan, making it ideal for families looking to settle into a safe, connected neighbourhood. As the area continues to grow, residents benefit from increasing property value potential while enjoying a lifestyle centred around space & community.

Our classic style Ballad Ready to Build plan features open plan living positioned to enjoy a lovely indoor-outdoor flow, with the bedroom wing providing shelter from the wind. The study is positioned close to the front door for home business activities or a fourth bedroom.



SPECIAL FEATURES

- Classic style with real street appeal
- Spacious open plan/living
- Functional layout with clear separation between living and sleeping zones

DIMENSIONS

| | |
|-------------------|-------------------------|
| Total Living Area | 139.0m ² |
| Garage Area | 41.3m ² |
| Total Floor Area | 180.3m ² |
| Porches | 4.4m ² |
| Total Area | 184.7m ² |
| Land Area | 457.0m ² mol |



*NB: These images are an indication of what can be built on the site for the package price based on our Ballad Ready to Build plan. For specification details speak with your New Home Consultant.

CONTACT US TODAY
09 294 6411
franklin@landmarkhomes.co.nz