



HOUSE & LAND PACKAGE

172 HITIRI ROAD, KINLOCH

EMBRACE A PREMIUM LIFESTYLE

\$1,970,000*

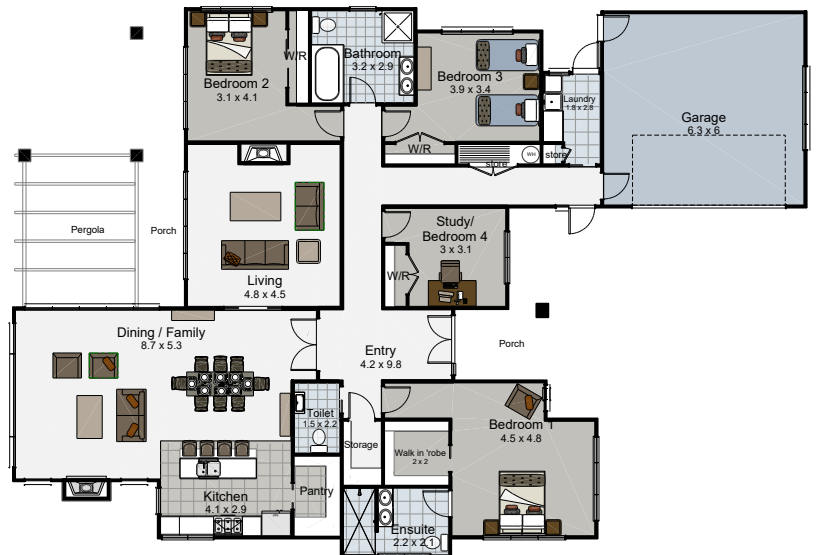
4 2.5 2 1

This House & Land package seamlessly integrates the contemporary design of the Lakeside Ready to Build plan with a location that offers the perfect balance of modern living and the beauty of Kinloch. Set in well-established Hitiri Rd, this is more than just a home, it's a chance to embrace a premium lifestyle surrounded by nature and convenience & a great view of Lake Taupō.

Nestled in one of Kinloch's most desirable locations, you'll enjoy stunning views of Lake Taupō, while being situated in a beautiful countryside location.

A Home Designed to Inspire
Spanning 264.8 sqm, this thoughtfully designed residence is the epitome of modern living. Every detail has been crafted with intention, from its seamless indoor-outer flow to the carefully curated spaces that adapt to your lifestyle. This isn't just a house; it's a sanctuary, designed to support and inspire your life.

This cedar-clad masterpiece is a rare find, delivering both luxury and value in a highly sought-after location - perfectly blending timeless appeal with modern living.



SPECIAL FEATURES

- Four Generously Sized Bedrooms
- Two Separate Living Areas
- Open Plan Living
- Elevated Ceilings (2.7m Stud)

DIMENSIONS

Total Living Area	224.8m ²
Garage Area	40.0m ²
Total Floor Area	264.8m ²
Land Area	20,000m ² mol



*NB: These images are an indication of what can be built on the site for the package price. Negotiation and purchase of this House & Land package will be directly through Landmark Homes - TH.

CONTACT REED MARSHALL
027 242 7190
reed.marshall@landmarkhomes.co.nz