



HOUSE & LAND PACKAGE

822 WHAKAPIRAU ROAD, MARAEKAKAHO

\$1,534,000*

LUXURIOUS GENEROUS LIVING

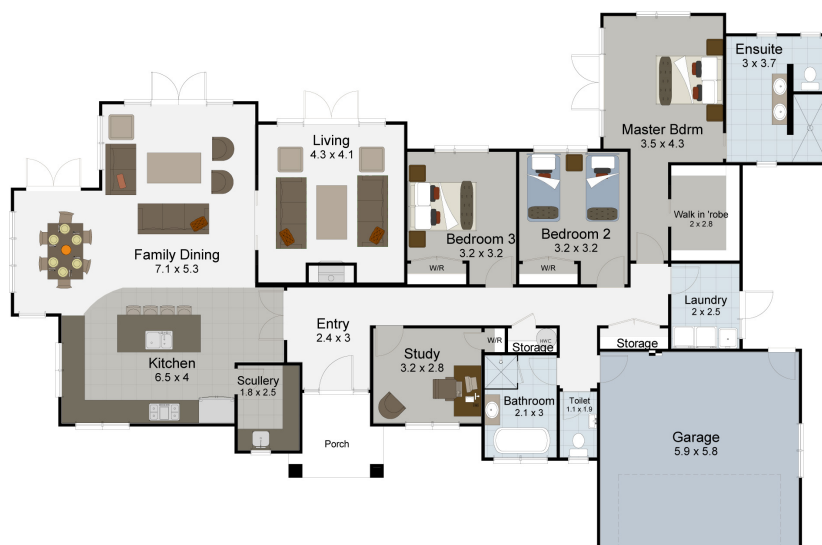
4 2.5 1 1

The Abel Tasman design is all about great living. The living spaces are generous, and the family room is open plan with kitchen and dining areas. A separate lounge is easily joined with large cavity sliders. Indoor-outdoor flows through French doors from each room and allows enjoyment of the outdoors at any time of day in a private area.

A large scullery complements the kitchen with great storage and extra work surfaces. This home is ideal for sites running east – west, so the entry and garage face south and the spacious bedrooms and living rooms benefit from all day sunlight. The master suite has a luxurious ensuite and walk in wardrobe. French doors open to outdoor living areas.

SPECIAL FEATURES

- Ideal for sites running east – west
- Large family kitchen with generous scullery
- Cedar and plaster combination cladding
- Luxurious master suite
- Spacious open plan living with great indoor-outdoor flow
- Separate internal laundry with outdoor access



DIMENSIONS

Total Living Area	199.4m ²
Garage Area	36.3m ²
Total Floor Area	235.7m ²
Porches	6.2m ²
Total Area	241.9m ²
Land Area	1.59Ha



*NB: These images are an indication of what can be built on the site for the package price. Negotiation and purchase of this House & Land package will be directly through Landmark Homes - TH.

CONTACT US TODAY
06 844 0944
saleshb@landmarkhomes.co.nz