



HOUSE & LAND PACKAGE

256A POINT WELLS ROAD, POINT WELLS

**\$4,735,000\***

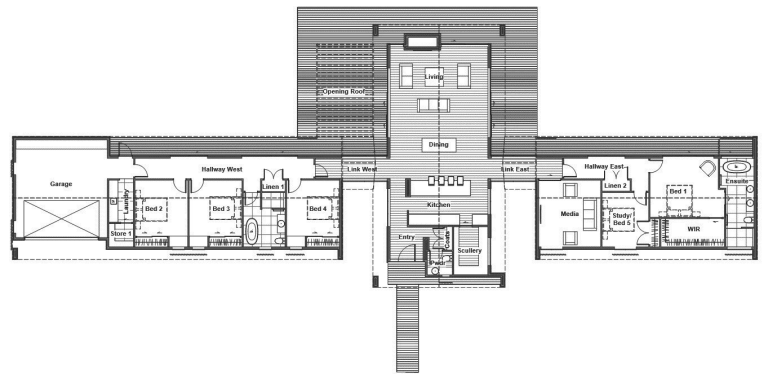
# LUXURY LANDMARK LIVING

4  2.5  2  1 

Discover the perfect blend of luxury and lifestyle with this stunning House & Land package in Point Wells. Set on a large site, the home has been designed with space, light and comfort in mind. Soaring vaulted ceilings enhance the open-plan living areas, creating a sense of grandeur and flow that connects seamlessly to the outdoors. With an 11m swimming pool as the centrepiece of the landscaped backyard, this home is designed for year-round entertaining and relaxation.

Inside, you'll find a luxurious master suite, three additional bedrooms plus a dedicated study, and a versatile media room for family living. The home has been crafted to maximise modern convenience and lifestyle, offering excellent indoor-outdoor flow with a louvre-covered alfresco area. Perfectly positioned in the sought-after Point Wells community, this package offers an exceptional opportunity to secure a home that balances elegance, functionality, and resort-style living.

Plans and further information available by contacting Ursula.



## SPECIAL FEATURES

- Vaulted ceilings in living areas
- 11m swimming pool
- Luxurious master suite
- Media room
- 4 bedrooms + study
- Excellent indoor-outdoor flow with louvre roof



## DIMENSIONS

Total Living Area	284m <sup>2</sup>
Garage Area	40m <sup>2</sup>
Total Floor Area	324m <sup>2</sup>
Land Area	7,779m <sup>2</sup> mol



\*NB: These images are an indication of what can be built on the site for the package price. Negotiation and purchase of this House & Land package will be directly through Landmark Homes North Shore & Rodney.

CONTACT URSULA GILCHRIST  
**021 906 688**  
[ursula.gilchrist@landmarkhomes.co.nz](mailto:ursula.gilchrist@landmarkhomes.co.nz)

