



HOUSE & LAND PACKAGE

2/11 FENCOURT ROAD, CAMBRIDGE, WAPIA

**\$1,650,000\***

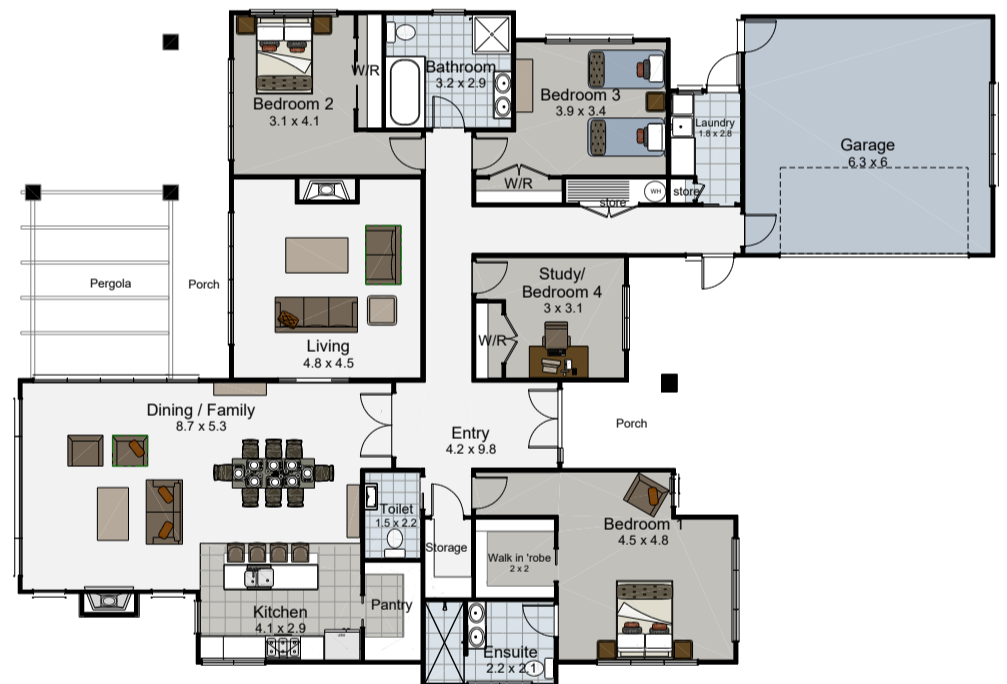
# MODERN COUNTRY LIVING IN MAUNGAKAWA

4  2  2  1 

Set on 8,419m<sup>2</sup> of prime bare land at 2/11 Fencourt Road, Cambridge, this exceptional lifestyle section offers a rare opportunity to create something truly special at the base of Maungakawa.

Work alongside Landmark Homes to create a bespoke architectural home designed specifically for this remarkable site – whether that’s a striking architectural residence, a warm and functional family home, expansive outdoor entertaining areas, extensive shedding, a pool, guest accommodation, or a private lifestyle retreat nestled naturally into the landscape, Landmark Homes can tailor a design to suit your lifestyle, vision, and budget.

Surrounded by established executive homes, manicured lifestyle estates, and quality neighbouring properties, this is one of Cambridge’s most tightly held and desirable countryside locations. Zoned for excellent schooling, protected by sensible covenants, and located just minutes from Cambridge township, the property delivers the perfect balance of convenience and peaceful rural living.



## SPECIAL FEATURES

- 8,419m<sup>2</sup> premium lifestyle section
- Prestigious Maungakawa location
- Surrounded by quality lifestyle properties

## DIMENSIONS

Total Living Area	224.8m <sup>2</sup>
Garage Area	40.0m <sup>2</sup>
Total Floor Area	264.8m <sup>2</sup>
Total Area	287.9m <sup>2</sup>
Land Area	8,419m <sup>2</sup>



NB: Images shown are indicative only and represent examples of homes that can be built on this site within the package price range. All Landmark Homes designs are fully customisable to suit your lifestyle, budget, and the site.



**CONTACT JACK COOPER**  
**021 090 70991**  
[jack.cooper@landmarkhomes.co.nz](mailto:jack.cooper@landmarkhomes.co.nz)

