



HOUSE & LAND PACKAGE

6 RONOMOR PLACE, WHITIANGA

\$P.B.N*

MODERN ELEGANCE MEETS FUNCTIONAL LIVING

3 2 2 1

Discover the Mezzo Ready to Build plan, a thoughtfully designed home that blends modern elegance with functional living.

This architecturally designed plan is perfect for families or professionals seeking a stylish, low-maintenance home with plenty of space to relax and entertain.

Step inside and start enjoying the open plan layout of this contemporary home.

Kitchen, Dining and Lounge all open out to a covered deck, perfect for outdoor entertaining. At the end of the day, retreat to your private Master Suite.

This property is located in a quiet cul-de-sac within the premier Whitianga Waterways. Stroll or cycle to town or grab your kayak and paddle along the canals to a local cafe for your morning coffee.

As one of New Zealand's premium building companies we pride ourselves on offering both a quality service and finish, as we take you on your own "Landmark" journey.

SPECIAL FEATURES

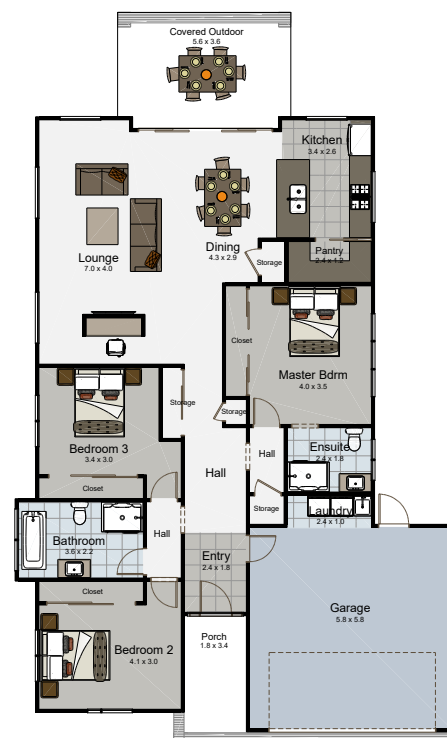
- Modern style exterior with combination cladding
- Open Plan
- Covered outdoor area

DIMENSIONS

Total Living Area	143.7m ²
Garage Area	35.3m ²
Total Floor Area	179.0m ²
Porches	25.7m ²
Total Area	204.7m ²
Land Area	612m ²



*NB: These images are an indication of what can be built on the site for the package price. Negotiation and purchase of this House & Land package will be directly through Landmark Homes Coromandel & Hauraki.



CONTACT US TODAY
07 901 0700

adminco@landmarkhomes.co.nz