



HOUSE & LAND PACKAGE

LOT 9 ADMIRAL ROAD, GLADSTONE, WELLINGTON

SERENE AND STUNNING HOME

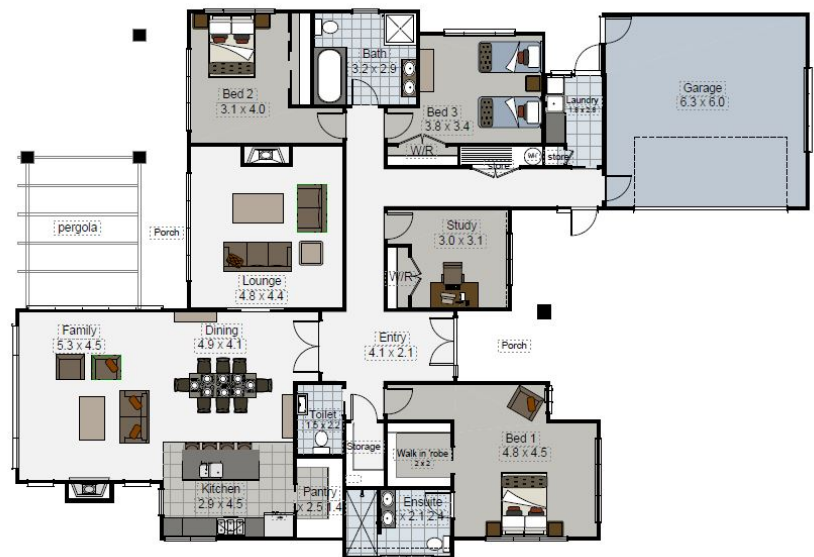
\$1,490,000*

4 2.5 2 1

Located in Gladstone, Wellington, this Landmark Home is an ideal design for your family. Crafted by Wellington's award-winning team, this home embodies excellence and quality. Enjoy the best of both worlds with a beautifully designed home set in a welcoming community.

This exceptional property spans over 2 hectares, offering generous space and flexibility for a variety of uses. Just a 2-minute drive from Gladstone School and conveniently close to local eateries, it combines serene surroundings with easy access to amenities.

Experience the perfect blend of modern elegance and natural beauty with our Lakeside home plan. This stunning residence offers seamless indoor-outdoor flow, enhancing your living experience with its spacious layout and striking extra-height windows. With four bedrooms, every family member will enjoy their own private retreat. The contemporary bathrooms are designed with style, while the state-of-the-art kitchen is perfect for family gatherings.



SPECIAL FEATURES

- High sloping ceilings in kitchen, dining and family rooms.
- Extra height windows for sun and views.
- Stunning views of mountains, hills and lush greenery.
- Abundant storage and spacious rooms.
- Located close to Gladstone School.



DIMENSIONS

Total Living Area	224.8m ²
Garage Area	40.0m ²
Total Floor Area	264.8m ²
Porches	23.1m ²
Total Area	287.9m ²
Land Area	2.15 hectares



*NB: These images are an indication of what can be built on the site for the package price. Negotiation and purchase of this House & Land package will be directly through LHW Holdings Ltd t/a Landmark Homes Wellington.

CONTACT EMMA DUNCAN
028 407 5949
emma.duncan@landmarkhomes.co.nz

