



HOUSE & LAND PACKAGE

218 BEDFORD ROAD, TE KOWHAI

COUNTRY LIVING CLOSE TO THE CITY

\$1,849,000*

4 2.5 2 1

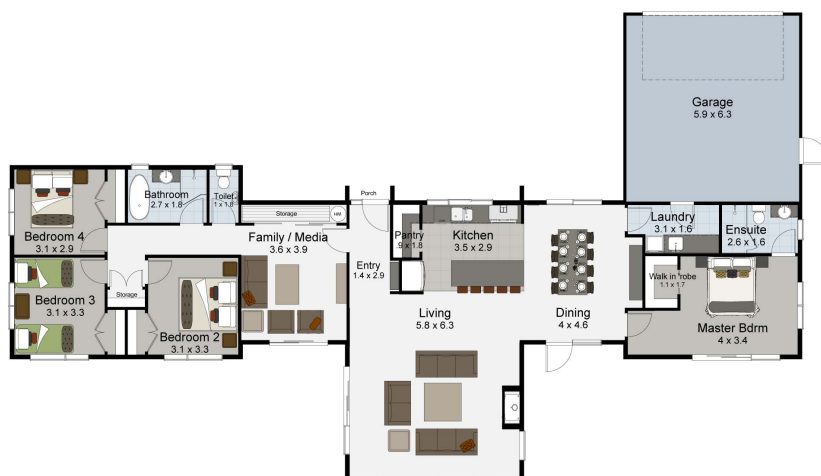
With Te Kowhai cafes and shops only 5 minutes away, shopping at The Base within 15 minutes and Decile 10 schooling almost on your doorstep - this House and Land opportunity offers an amazing lifestyle suited to all stages of living.

This stunning, spacious open plan living, dining, and kitchen area is flanked by the master suite and garage on one side and the family room and bedrooms on the other.

The Northlake Ready to Build layout is ideal for family living or hosting guests as it provides separation and privacy.

Sheltered outdoor areas are created by the living pavilion. Regardless of the wind direction there is always a sheltered corner where you can enjoy the outdoors.

The section is approximately 5000m² - big enough to add a future shed, swimming or orchard...but not too large that you cannot maintain, while getting on with busy life.



SPECIAL FEATURES

- Modern pavilion design
- Family bedrooms and media room separated from master suite
- 2.55m ceilings throughout with sloping ceiling in living and kitchen

DIMENSIONS

Total Living Area	177.0m ²
Garage Area	39.4m ²
Total Floor Area	216.4m ²
Porches	2.9m ²
Total Area	219.3m ²
Land Area	5020m ² mol



*NB: These images are an indication of what can be built on the site for the package price. Negotiation and purchase of this House & Land package will be directly through Landmark Homes - TH.

CONTACT SHANE KEAT
027 205 8690
shane.keat@landmarkhomes.co.nz