



HOUSE & LAND PACKAGE

7 KAKANO STREET, CLEVEDON

**\$1,460,000\***

# STYLISH STREET APPEAL

3 2.5 2 2

Welcome to Clevedon Meadows, an inspiring new lifestyle development nestled in the heart of the countryside, just a leisurely five-minute stroll from Clevedon's historic town centre. Surrounded by rolling, tree-lined meadows and lush, wooded hills, this picturesque enclave blends natural beauty with modern design to offer the ultimate in relaxed country living.

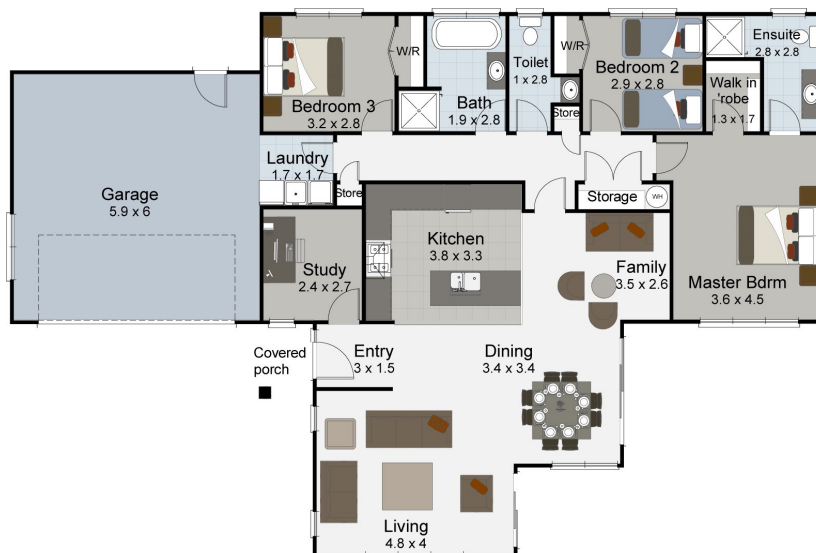
Our Ballard Ready to Build plan is a standout, featuring timeless weatherboard cladding and a light, airy aesthetic that radiates street appeal. Step inside to an open-plan living area designed for seamless indoor-outdoor flow—perfect for entertaining or unwinding in the fresh country air. The cleverly positioned bedroom wing offers privacy and protection from prevailing winds, while the front-facing study provides an ideal setup for home-based professionals.

The master suite is a true retreat, complete with a generous walk-in wardrobe and a spacious ensuite for everyday luxury.

\*\*The floor plan of our standard Ballard plan will need to be reduced slightly to comply with site coverage.

## SPECIAL FEATURES

- Open plan living with indoor-outdoor flow
- Morning and afternoon sun in living areas
- Thoughtful living in an easy layout
- Allowances for fencing, landscaping and driveways/paths



## DIMENSIONS

Total Floor Area	175.0m <sup>2</sup>
Porches	4.4m <sup>2</sup>
Total Area	179.4m <sup>2</sup>
Land Area	500.0m <sup>2</sup> mol



\*NB: These images are an indication of what can be built on the site based on our Ballard Ready to Build plan, speak with your New Home Consultant for specification details.

**CONTACT US TODAY**  
**027 208 4004**  
southeast@landmarkhomes.co.nz